

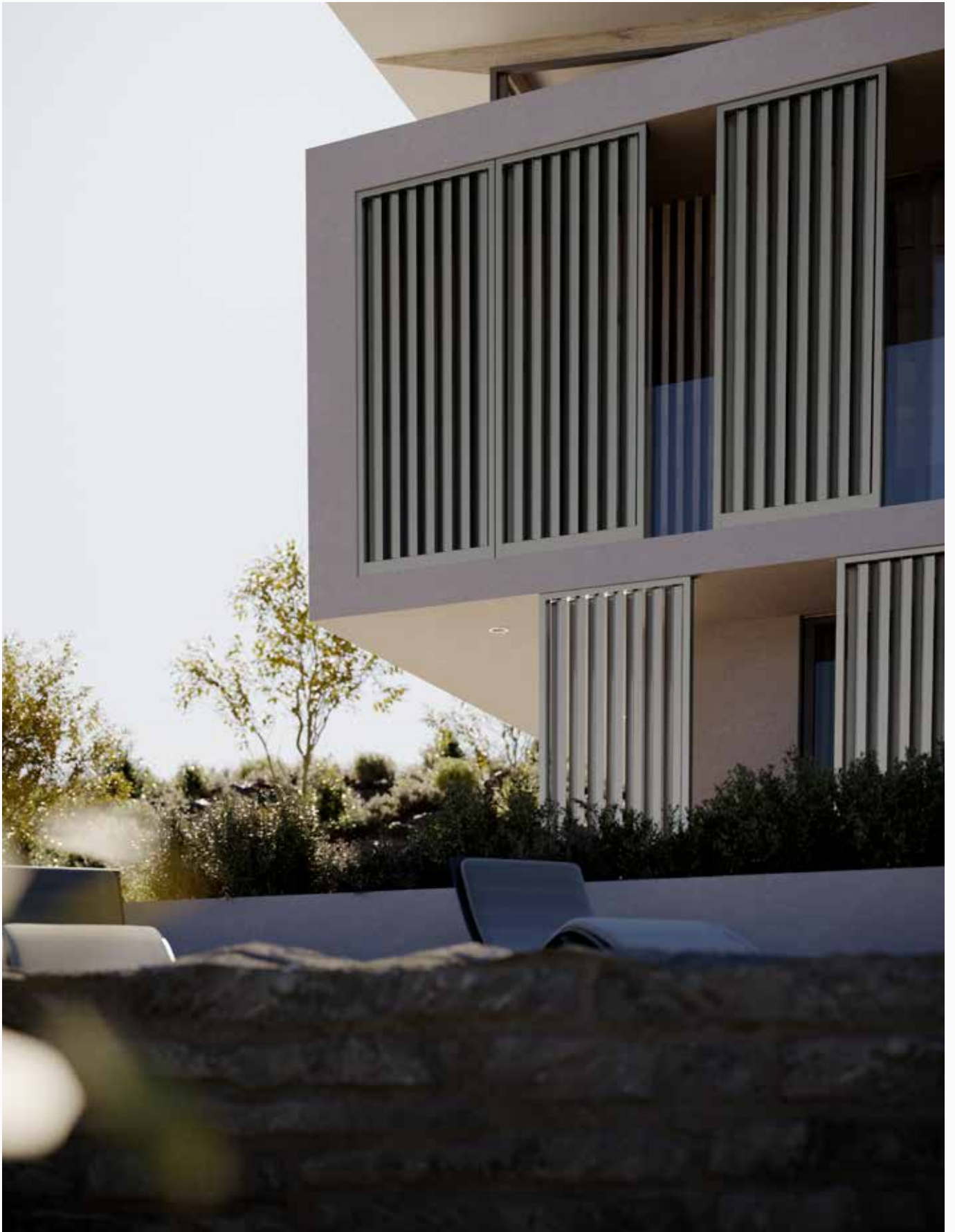


**Sun Shading®**  
SMART MODULES FOR BUILDINGS

NEWS//2025


# Sun Shading

---



# BORN MODULAR TO BE SINGULAR

The Sun Shading® project was born out of our desire to create something **unique in design and function** in response to the demands of an increasingly dynamic and demanding market.

 What surrounds us shapes  
the way we live.

Therefore, imagine what we could create that improves peoples' **well-being** in the places they spend time in everyday all while experimenting with cutting-edge techniques to make buildings increasingly **smart and sustainable**.

Sun Shading® designs **modular ready-made** systems (ready-to-install) that can be customized in terms of material, shape, size and color. These panels enhance the potential of an extremely versatile product created to **turn any building into a work of art**.



Custom  
Materials



Custom  
Shape



Modular



Custom  
Color



Ready  
Made

WHAT'S NEW



BLADES FOR  
BLADER  
MODULES

blader



SUNRISE

sunrise



STEELIUM

steelium



# Sun Shading // BLADER



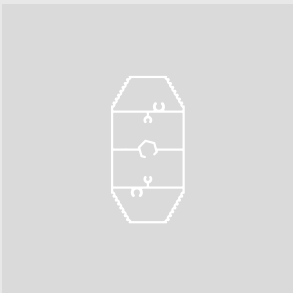
+ SPINNER



+ METEOR



+ ORBITER



+ STONE



+ BUTTERFLY

# BLADES DESIGN FOR BLADER MODULES



Our in-house R&D department has developed several designs for Blader module blades.

---

## BENEFITS

Variety of designs for different needs: each shape is designed to suit different architectural contexts and environments, offering both aesthetic and functional solutions.

Solar efficiency and light control: with our different designs, incoming sunlight is regulated, improving the energy efficiency of buildings. Some shapes can maximize shading or optimize natural lighting.

High-quality materials and durability: the blades are made of extruded aluminum, a durable and weather-resistant material that ensures long-lasting performance.

Customization and design flexibility: a choice of different designs allows Blader modular systems to be integrated with the aesthetics of buildings, giving a high degree of design flexibility.

---

---

# Sun Shading // SUNRISE





# SUNRISE CLASSIC



Extruded aluminum module with **fixed horizontal or vertical slat infill**, in two solutions, with 43mm x 25mm, or 100mm x 25mm slats.

---

The sash profile of the Sunrise Classic model is 35mm thick on the outside and 80mm on the inside.

## Main advantages

---

- **ULTRA-THIN PROFILE:**  
The reduced profile of the frame makes Sunrise Minimal a discreet and elegant solution, perfect for modern projects that enhance aesthetics without compromising functionality.
  - **GREATER VISUAL LIGHTNESS:**  
The slim profile design allows for harmonious integration with any facade, without weighing down the aesthetics of the building.
  - **EFFICIENCY IN SOLAR SHADING:**  
The system enables precise control of light and heat, improving the comfort of interior spaces and reducing the need for cooling.
  - **VERSATILITY OF USE:**  
Sunrise Minimal is suitable for a variety of architectural contexts, both residential and commercial, where minimalist design is essential for clean, contemporary architecture.
-

---

# Sun Shading // SUNRISE



# SUNRISE MINIMAL



Extruded aluminum module with fixed horizontal or vertical slat infill with a **slim sash profile**, for an **aesthetic design solution** in three solutions, with 40mm x 20mm, 60mm x 20mm, or 100mm x 20mm slats.

The **Sunrise Minimal** module represents the evolution of our iconic **Sunrise** system with an even thinner sash profile, designed for those who want a modern, minimalist aesthetic without sacrificing sun protection and comfort.

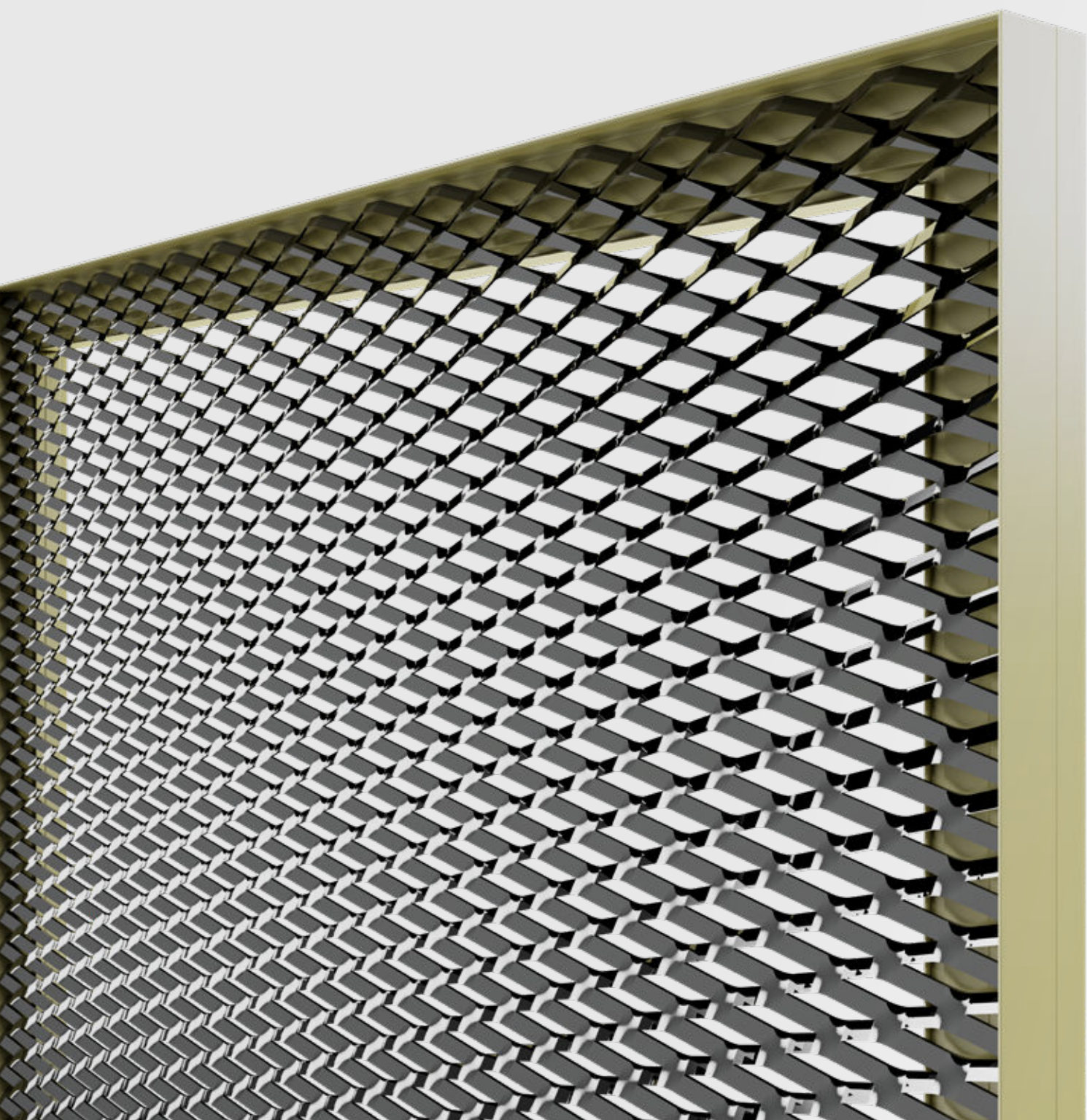
With its minimalist design, Sunrise Minimal enhances the appearance of any facade, offering optimal performance in terms of light control and ventilation.

Thanks to the thin sash profile of 2mm outer side and 54mm inner side, Sunrise Minimal offers several advantages.

## Main advantages

- **ULTRA-THIN PROFILE:**  
The reduced profile of the frame makes Sunrise Minimal a discreet and elegant solution, perfect for modern projects that enhance aesthetics without compromising functionality.
- **GREATER VISUAL LIGHTNESS:**  
The slim profile design allows for harmonious integration with any facade, without weighing down the aesthetics of the building.
- **EFFICIENCY IN SOLAR SHADING:**  
The system enables precise control of light and heat, improving the comfort of interior spaces and reducing the need for cooling.
- **VERSATILITY OF USE:**  
Sunrise Minimal is suitable for a variety of architectural contexts, both residential and commercial, where minimalist design is essential for clean, contemporary architecture.

# Sun Shading // STEELIUM



# STEELIUM



The expanded metal sheet used for Steelium modules is produced through an etching and stretching process, which produces no raw material waste. It is ideal for making modern and attractive facade cladding.

---

## BENEFITS

**Design and Aesthetic Versatility:** expanded metal allows for unique and customizable designs, enhancing both the aesthetic and functional aspects. This goes well with an audience seeking contemporary and innovative architectural solutions.

**Strength and Durability:** as a robust and weather-resistant material, expanded metal provides a long service life. This can be a key point for clients who desire durable and low-maintenance solutions.

**Energy Efficiency:** due to its perforated structure, expanded metal allows optimal control of sunlight and ventilation, reducing the need for air conditioning and improving the energy efficiency of buildings.

**Lightness and Ease of Installation:** expanded metal is lightweight, which makes the installation process easier and faster than other solutions. This can cut down on transportation and installation costs, an important consideration for construction projects.

## Choosing the right mesh

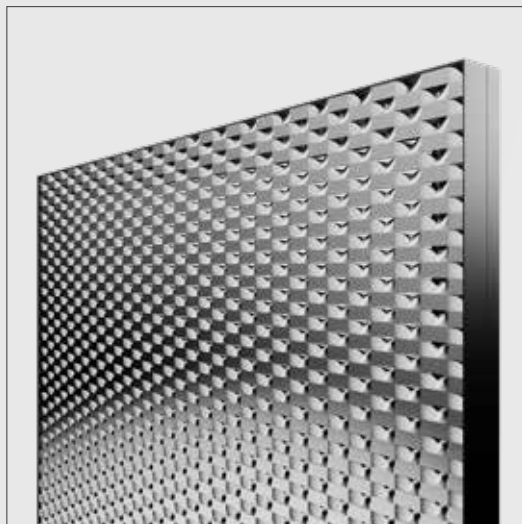
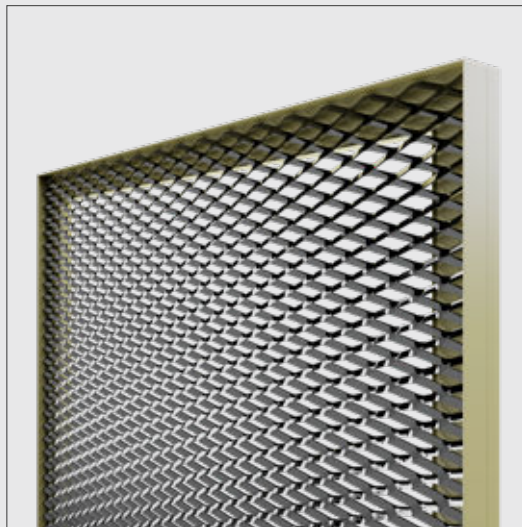
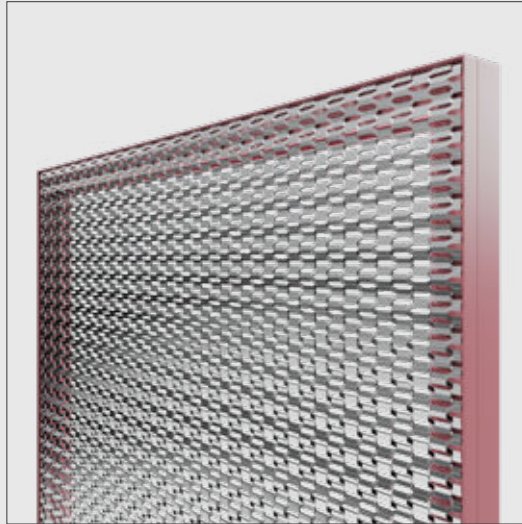
---

By listening to your design needs, we can help you choose **the right Steelium model** by evaluating the different options available:

- + THE GEOMETRY OF THE MESH
  - + THE THICKNESS OF THE MODULE
  - + THE TRANSPARENCY
    - (FROM CLOSED TO OPEN MESH)
  - + THE SHADING
  - + THE AERATION
-



# Sun Shading // STEELIUM





## STEELIUM ORIGINAL

---

**Open mesh. The right compromise for good lighting and aeration.** Original features a front opening of about 33%, a right middle ground between light and shade, while also allowing good ventilation.

## STEELIUM DYNAMIC

---

**Semi-open meshes. Eclectic textures.** Dynamic creates **fluid surfaces**. It is a transparent and shading **coating** at the same time, with a frontal opening of 42%.

## STEELIUM PRIVACY

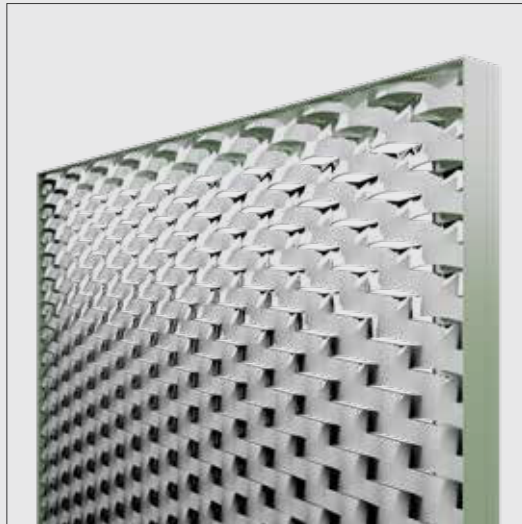
---

**Very closed shirts. Maximum privacy.** A front opening of 10% defines an almost totally opaque mesh, suitable for **coverings and protections**, in all those contexts where masking and concealment is necessary. These meshes are suitable, for example, for fences and railings where there is a need **to ensure maximum confidentiality**.

---

---

# Sun Shading // STEELIUM







## STEELIUM EMBASSY

---

**Semi-closed meshes. See-through effect.** 'Semi-closed' meshes, with 16% front opening, are suitable for so many architectural and carpentry applications. They have a **see-through effect** and fit easily into all kinds of contexts.

## STEELIUM PHOENIX

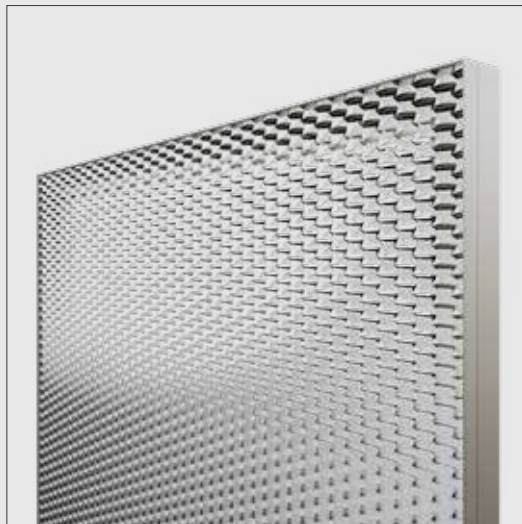
---

**Meshes with elongated geometry for a magical design.** Phoenix's unique geometry creates a play of light and shadows that will make your rooms even more fascinating. The 25% front opening also allows for good airflow.

---

---

# Sun Shading // STEELIUM





## STEELIUM HIVE

---

**Very open meshes. Effect textures. A high front opening** with a v/p of 60% defines a **'very transparent'** mesh. It is a stretched sheet of **effect**, allowing a glimpse of the background.

## STEELIUM RESIDENCE

---

**Semi-closed meshes. See-through effect.** Residence features **'semi-closed' meshes** with a frontal opening of 11%. Suitable for residential and living contexts where a certain degree of privacy is desired.

---



**Sun Shading®**  
SMART MODULES FOR BUILDINGS

## Sun Shading

---

HEADQUARTERS  
Via Ferri 14/16 – 25010 Borgosatollo BS

REGISTERED OFFICE  
Via Montenapoleone n.8 – 20121 MILANO

[www.sunshading.it](http://www.sunshading.it)  
[info@sunshading.it](mailto:info@sunshading.it)

